

WinTool Interface for Esprit EDGE

Setting up a Central Database for Cutting Parameters (KBM)

To set up a central knowledge database, the key **kbmSource** must be changed in the Esprit-EDGE interface using the Registry Editor.

The key can be found under **HKEY_CURRENT_USER\SOFTWARE\WinTool\WT-Esprit-EDGE-Interface** and must be adjusted according to one of the following patterns:

With Username and Password

Data Source=<Server>\<Instance>;Initial Catalog=<Catalog>; User ID=<Username>;Password=<Password>

With Windows Authentication

Data Source=<Server>\<Instance>;Initial Catalog=<Catalog>;Integrated Security=true

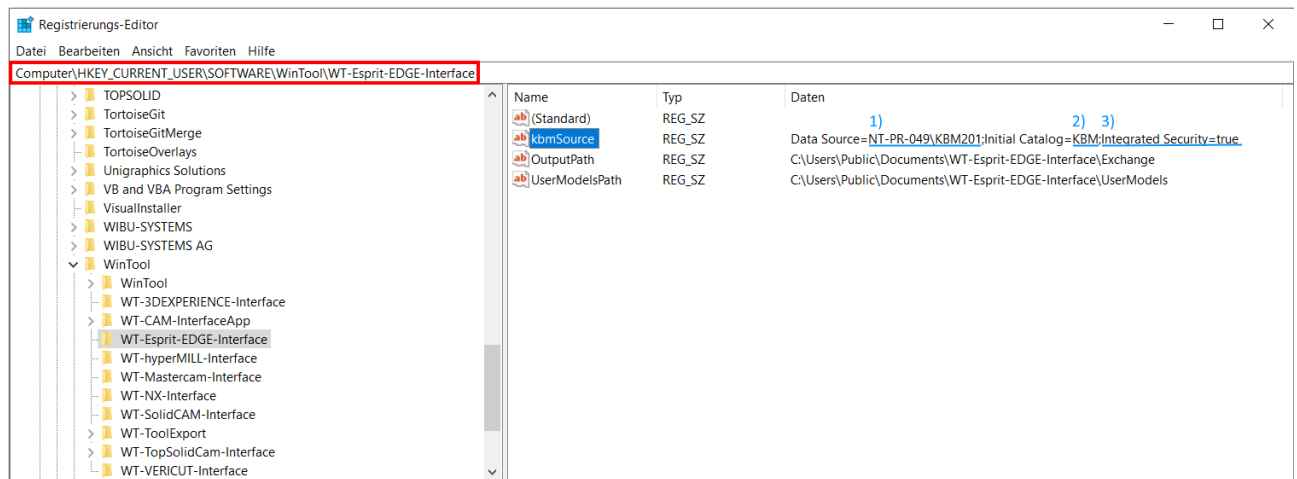


Figure 1 Registry Editor

The values for the placeholders can be taken from the Esprit EDGE settings dialog.

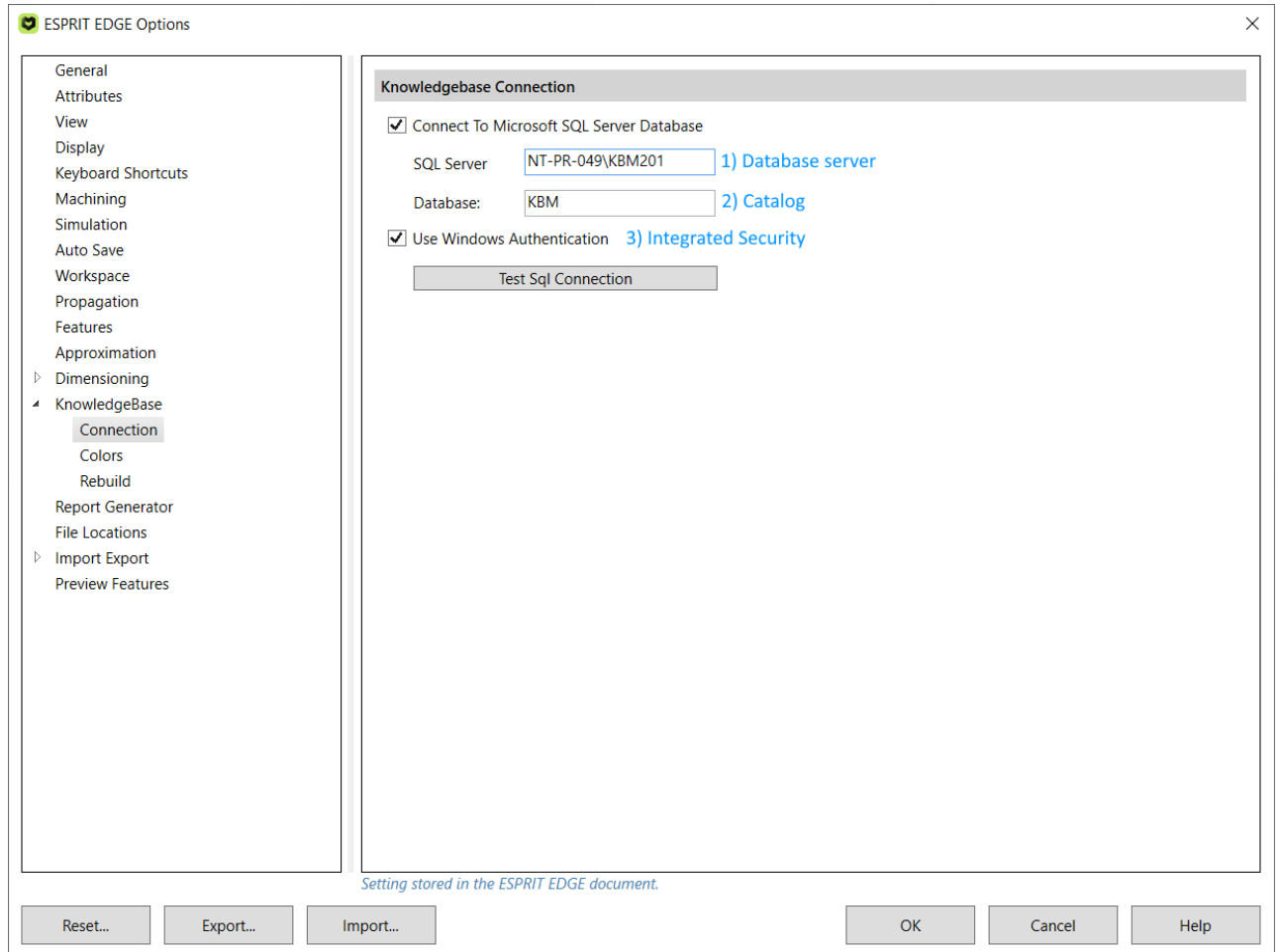


Figure 2 Esprit EDGE Options Dialog for KnowledgeBase

Registry Editor

The Registry Editor can be opened by running regedit via the Run dialog.

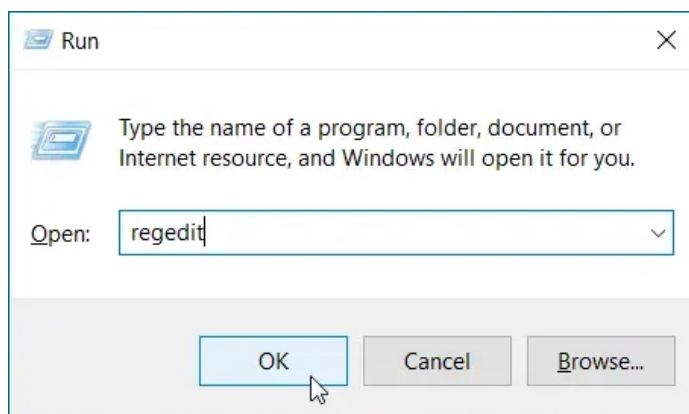


Figure 3 Run dialog

Or through the search function in the Start menu.

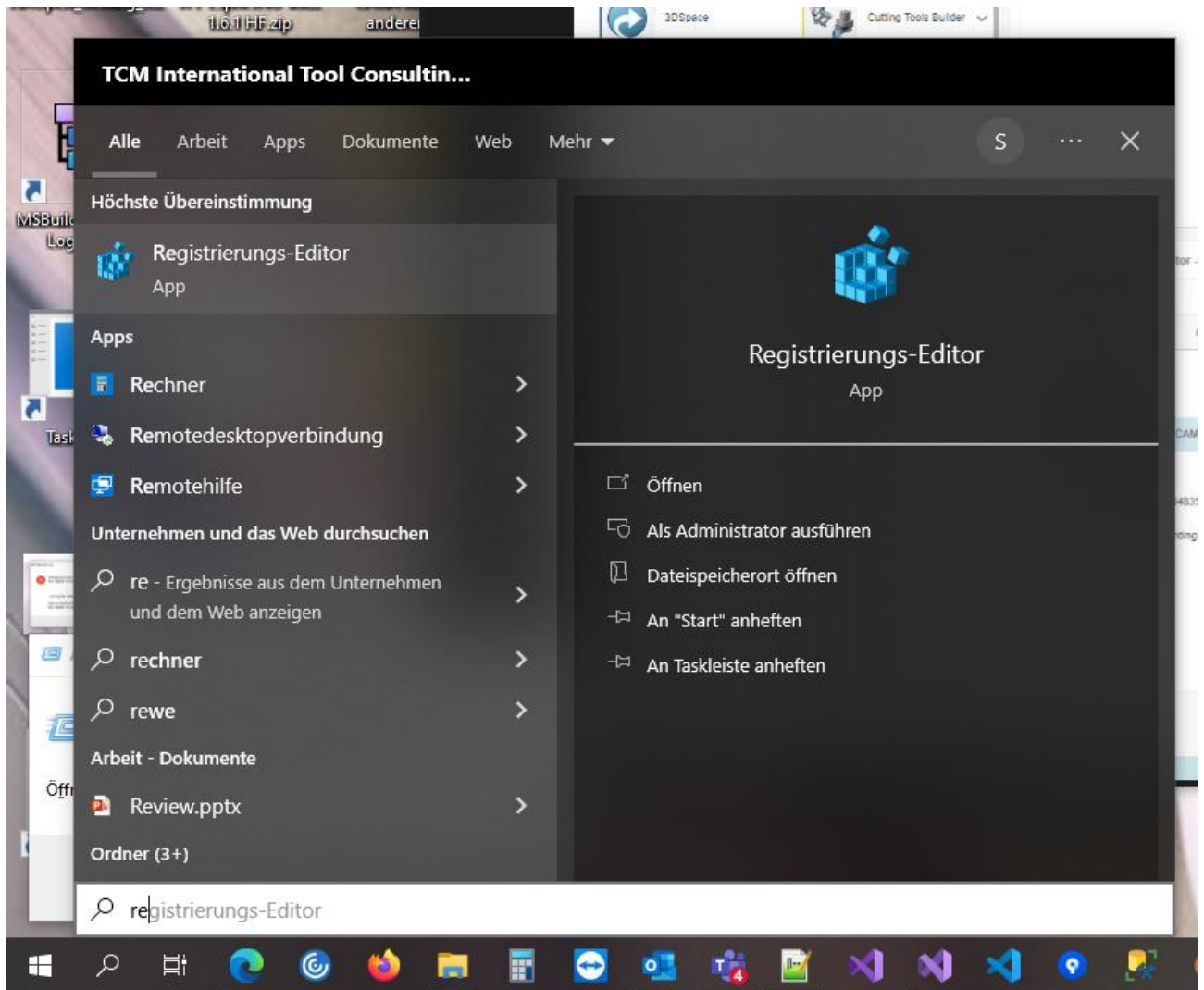


Figure 4 Windows Start menu search